

Intermediate: Roxio Easy CD Creator 5 (4)

Ejecting a disk from the CD drive

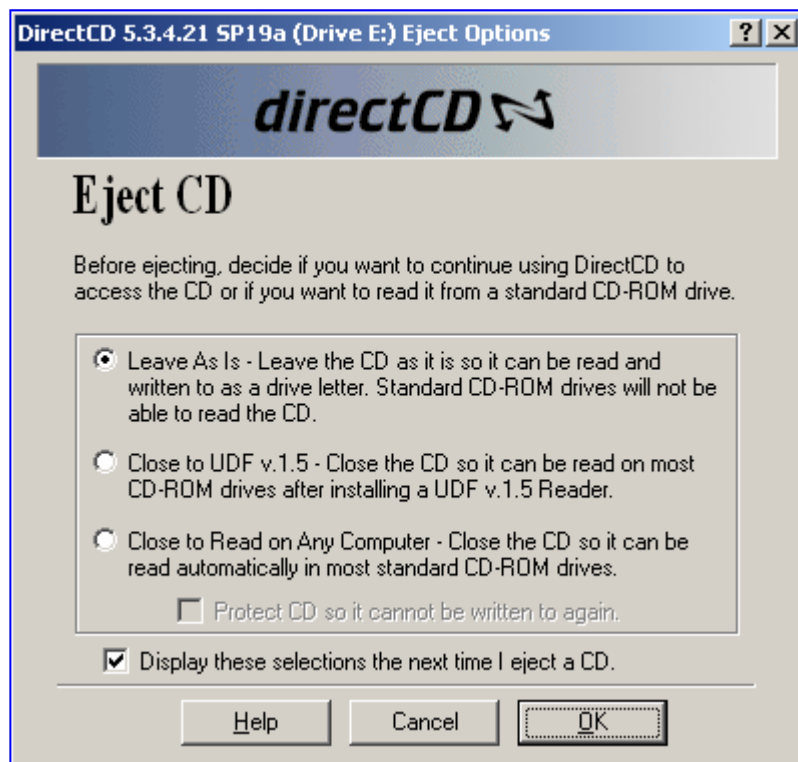
1. Double click on **My Computer** on the **Desktop**.
2. Click on the **CD drive** to select it.
3. Click on **File** on the Menu bar.
4. Click on **Eject**.

Ejecting a DirectCD CD-RW Disk

When you eject a CD-RW disk, DirectCD ejects the disk immediately.

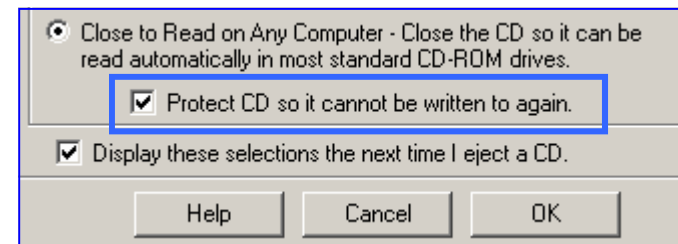
Ejecting a DirectCD CD-R Disk

When you eject a CD-R disk, the **DirectCD Eject Options** dialogue box will appear, offering you three possible options.



The option you select depends on how you plan to use the CD.

- To use the disk with any recordable disk drive so that you can keep adding and modifying files on it, choose the **Leave As Is** option. CD-ROM drives will not be able to read the disk.
- To be able to read the files on the disk using a CD-ROM drive, but to also be able to add and modify the files on the disk using any recordable disk drive, choose the **Close to UDF v.1.5**. This option automatically copies the UDF Reader for Windows to your CD. When you insert the CD into a CD-ROM drive, the reader will automatically ask if you want to install it. All the files on the disk will become read-only. This option uses less space on the CD for each session than the next option (Close to Read on Any Computer).
- To be able to read the files on the disk using a CD-ROM drive, without the need for a UDF reader, or to use the disk on PCs that uses a different operating system, like Linux, Unix and Macintosh, choose the **Close to Read on Any Computer** option. This option will take up approximately 22MB of space on the disk for the first session, and approximately 13 MB for each additional session.
- To permanently close the disk so that you can never add or modify any files on it, and to also make it compatible with any CD-ROM drive, choose the **Close to Read on Any Computer** option, and select the **Protect CD So It Cannot Be Written To Again** option.



Click on the **OK** button. The disk will be ejected.

Don't forget to use the built in Help files, which are very comprehensive.